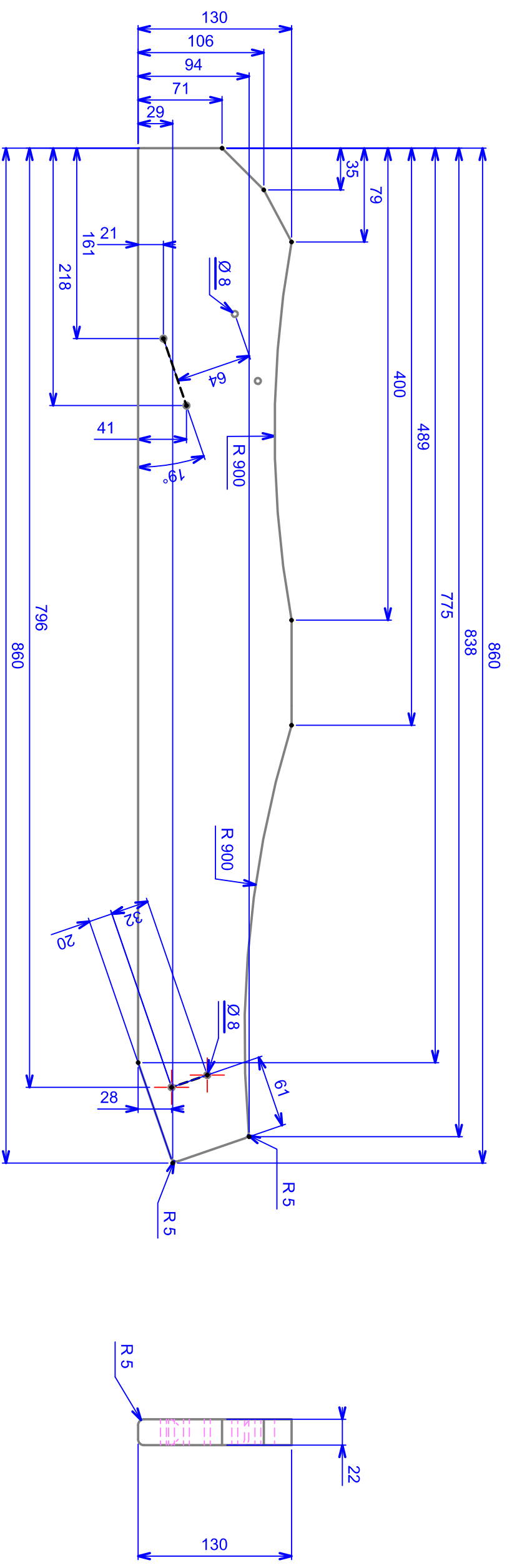


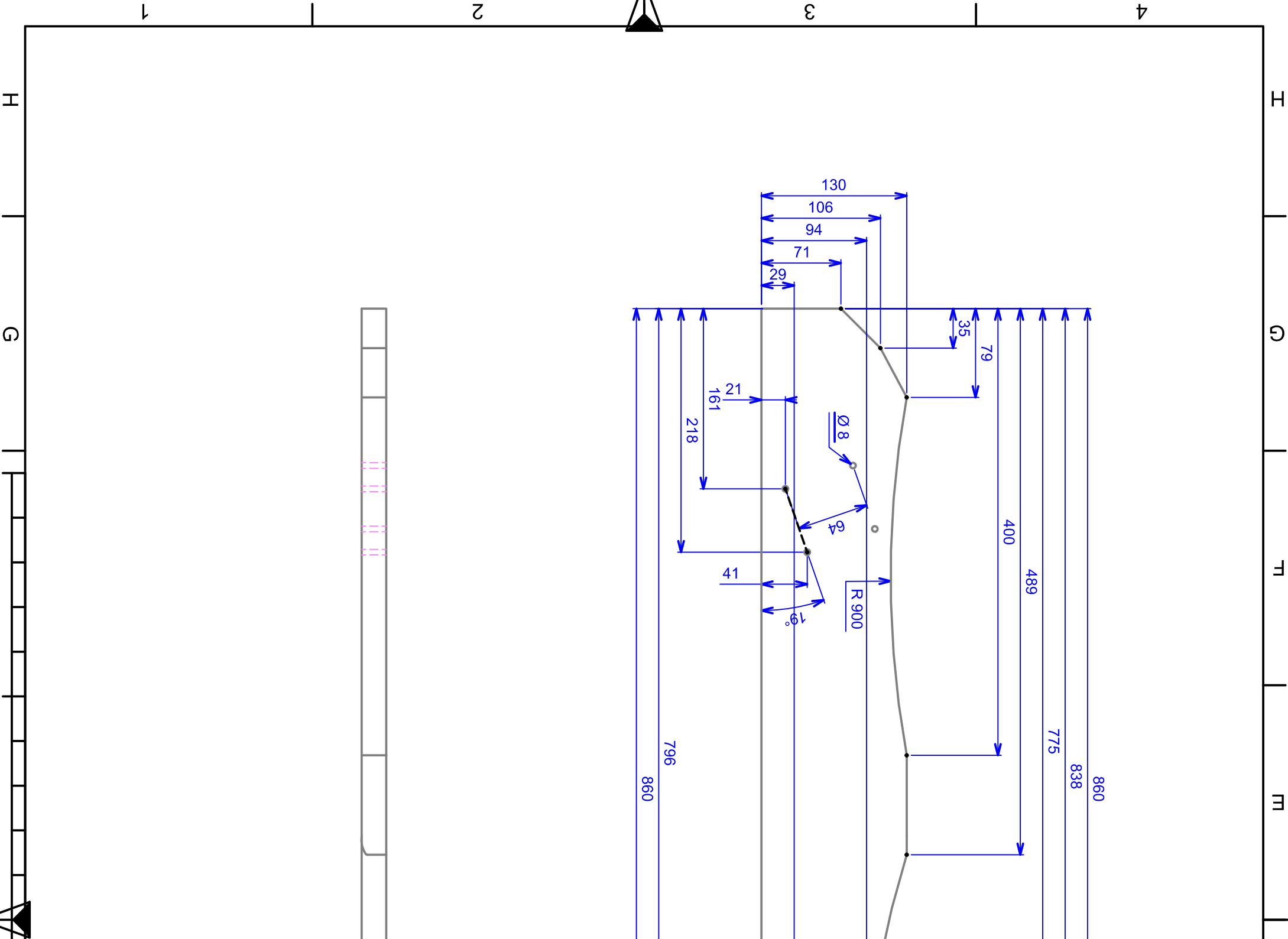
ÉCHELLE 1:10	Fautueil Adirondack	Dessin d'ensemble et Nomenclature	AUTEUR	
			DATE	15/09/2012
Page 1/9	LP Alfred SAUVY	BAC PRO TMA		
				00

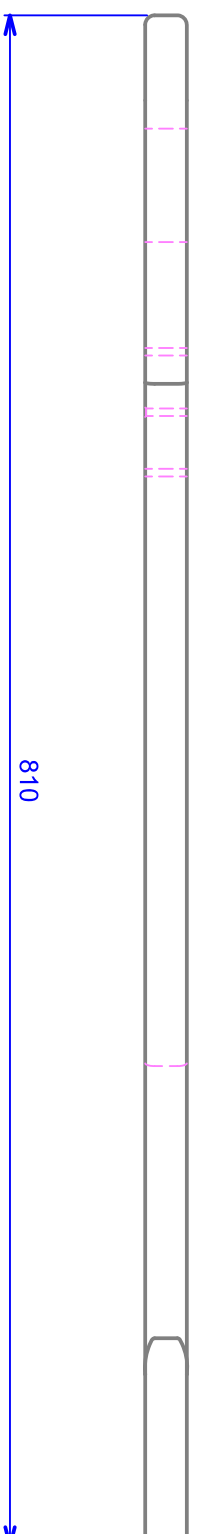
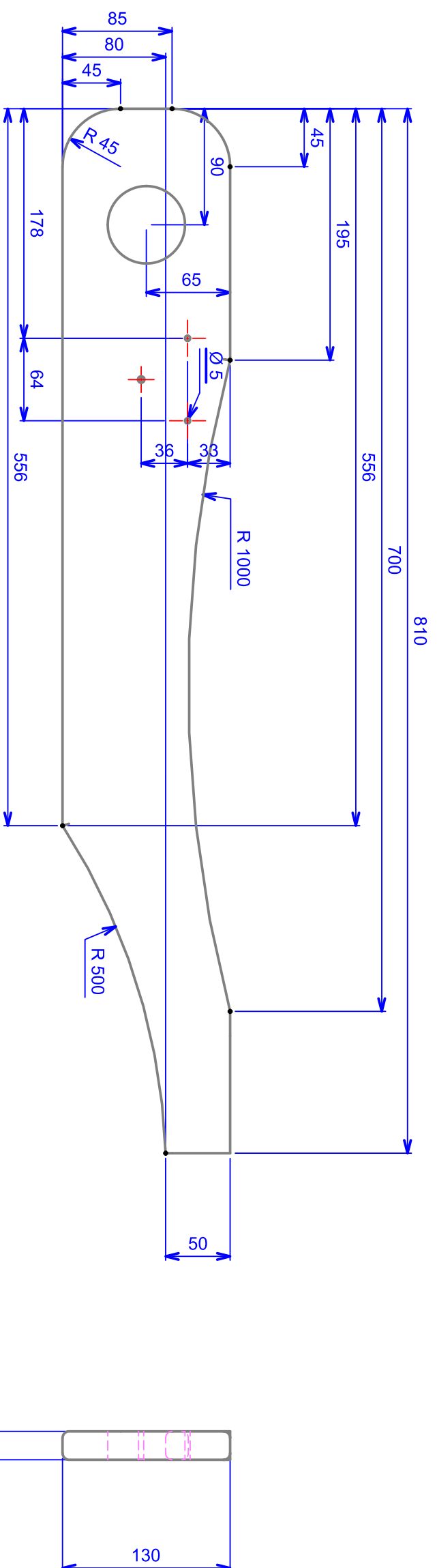
H G H T T D C B A


1 2 3 4



ÉCHELLE 1:4	Fautueil Adirondack		AUTEUR		
	Traverse assise		DATE	15/09/2012	
	LP Alfred SAUVY				
	BAC PRO TMA				00
Page 2/9					

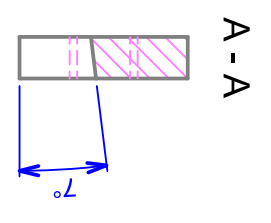
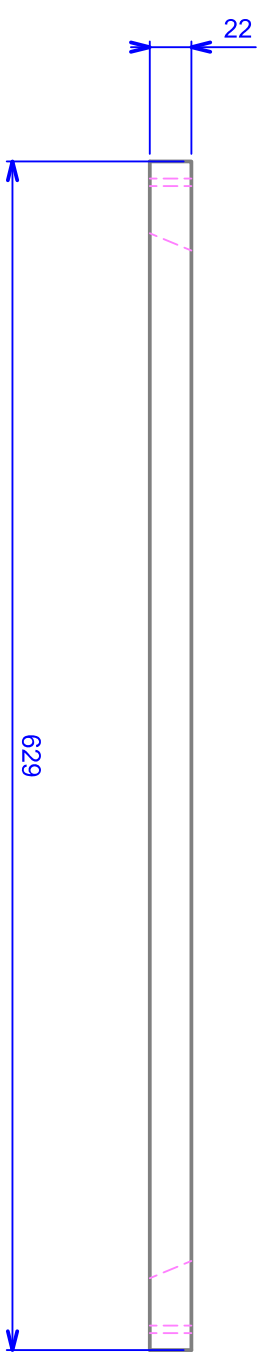
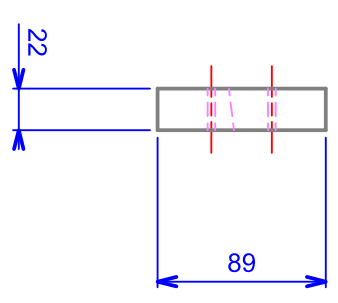
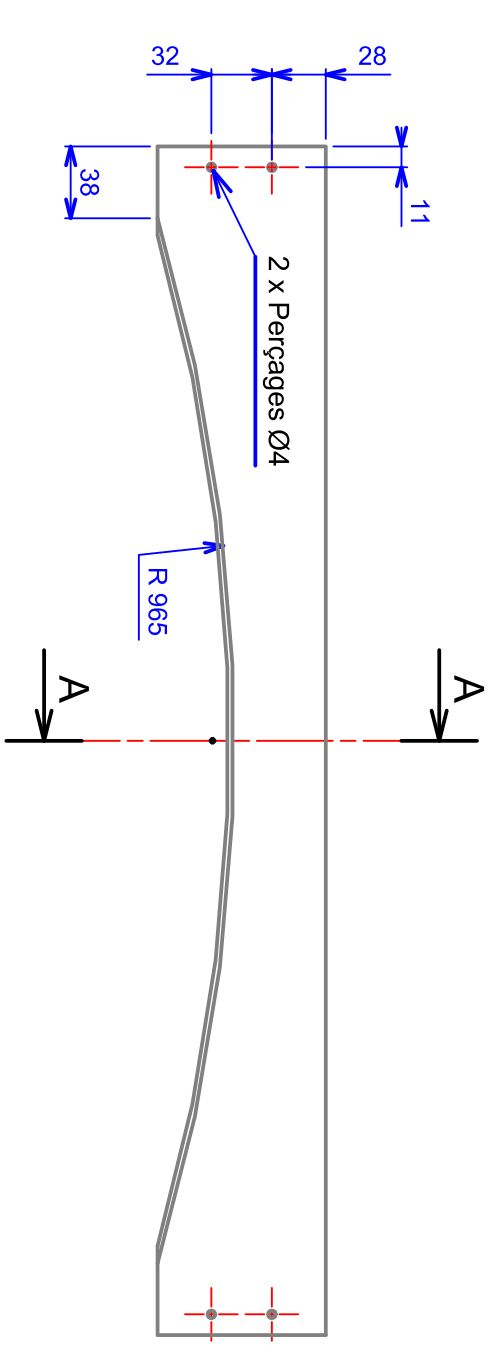




ÉCHELLE 1:4	Fautueil Adirondack		AUTEUR	
	Accoudoir		DATE	15/09/2012
 Page 3/9	LP Alfred SAUVY			
	BAC PRO TMA			
				00

H G H G H D C B A

1 2 3 4 1 2 3 4

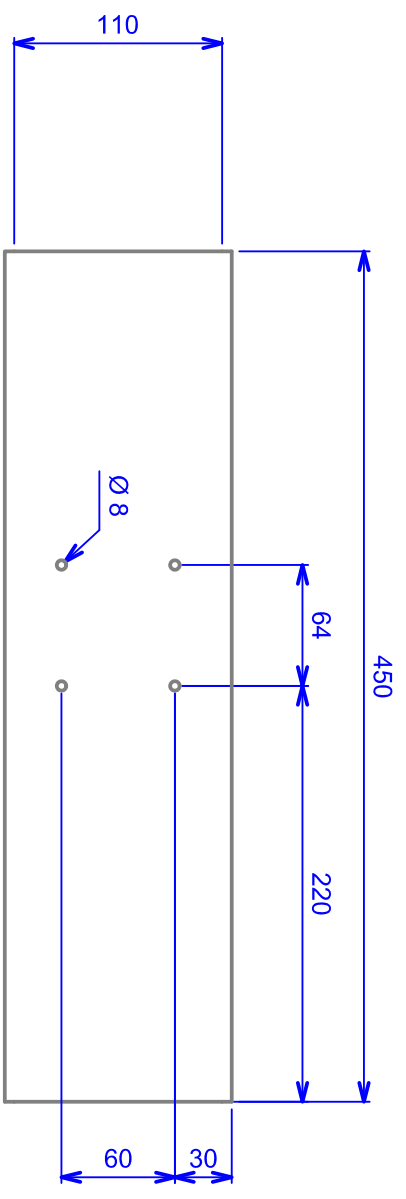


ÉCHELLE 1:4	Fauteuil Adirondack		AUTEUR	
	Traverse basse dossier		DATE	15/09/2012
	LP Alfred SAUVY			
	BAC PRO TMA			

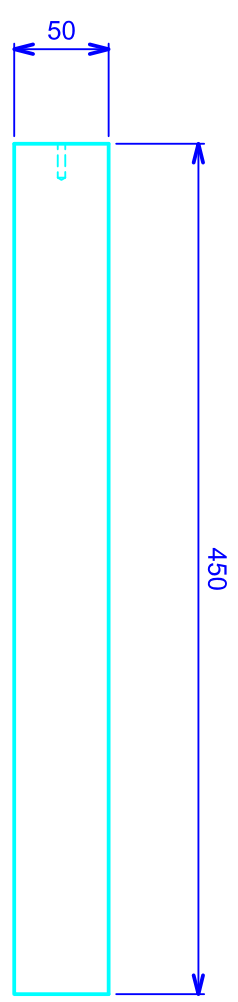
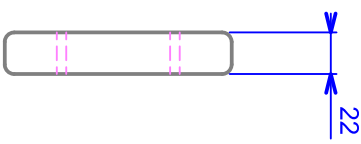
Page 5/9

H G B A

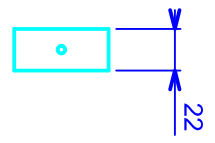
1 2 3 4




Pied avant



Renfort pied avant

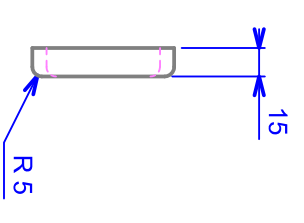
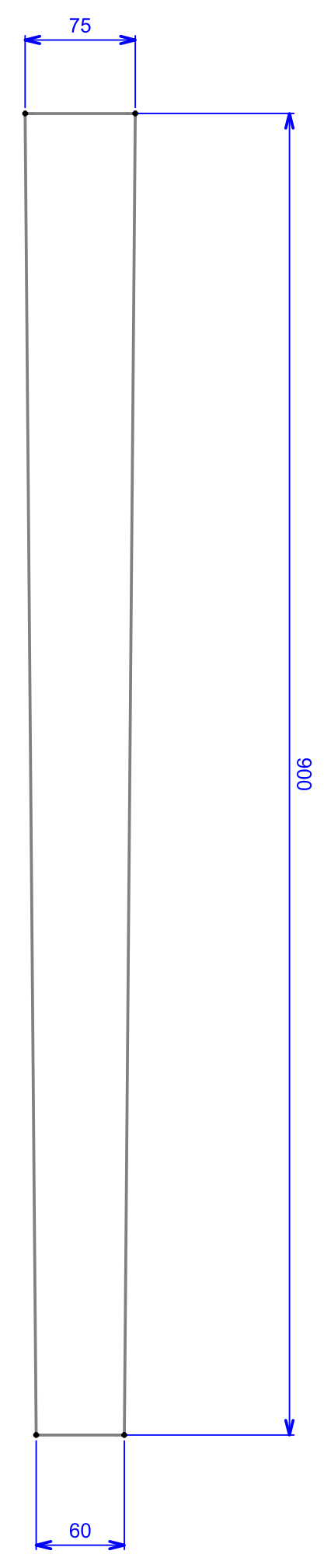


ÉCHELLE 1:4	Fauteuil Adirondack		AUTEUR	
	Pied avant		DATE	15/09/2012
 Page 7/9	LP Alfred SAUVY			
	BAC PRO TMA			
				00

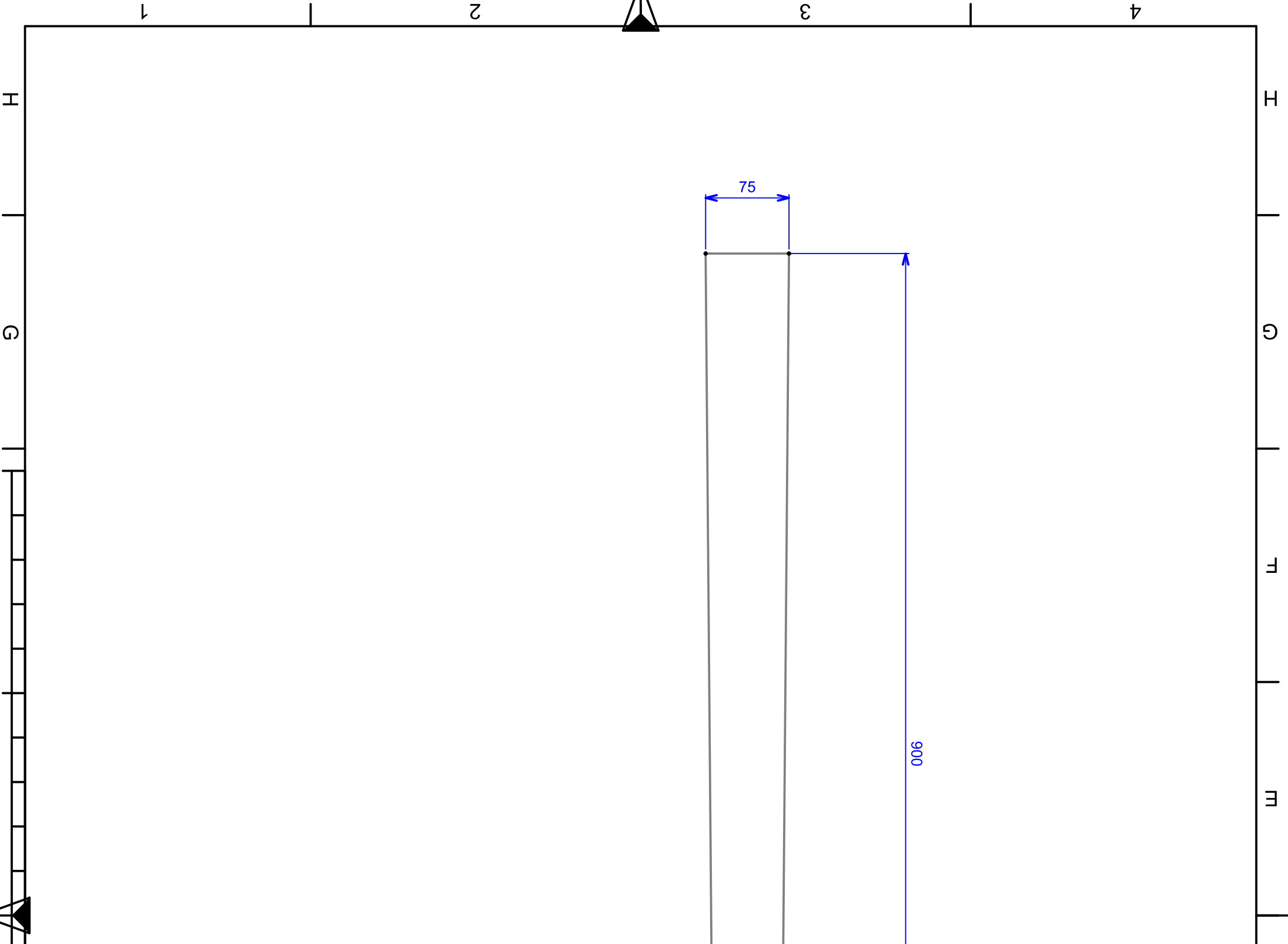
H G H T M D C B A

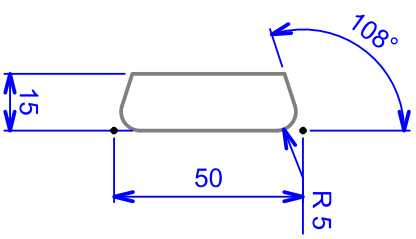
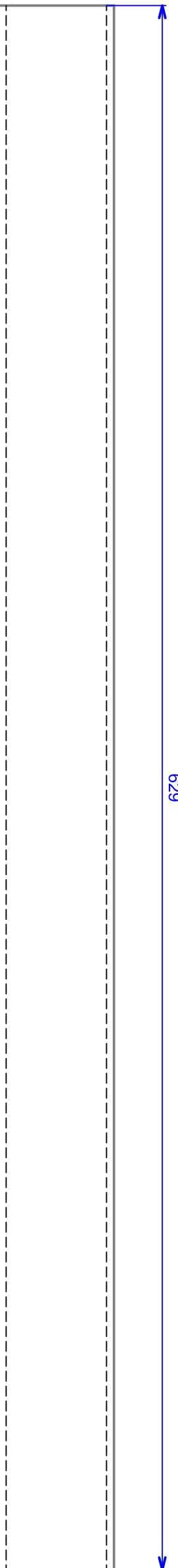
4 3 2 1


4 3 2 1



ÉCHELLE 1:4	Fautueil Adirondack		AUTEUR	
	Lame dossier		DATE	15/09/2012
	LP Alfred SAUVY			
	BAC PRO TMA			
Page 8/9				00





ÉCHELLE 1:2	Fautueil Adirondack		AUTEUR		
	Lame assise		DATE	15/09/2012	
 Page 9/9	LP Alfred SAUVY				
	BAC PRO TMA				
					00

